

Installation Instructions for JDK 5.0

(Pre-requisite for FPU and FVU operation)

System Requirements:

JDK 5.0 application can be installed on Microsoft Windows 2000 and Windows XP. The minimum RAM required is 512 MB. For installing JDK the user has to login as administrator.

Installation procedure:

Copy the Executable file (.EXE) in a folder on C drive. Execute the self-installing executable (by double clicking on the **jdk-1_5_0_07-windows-i586-p.exe** file) to unzip and install the JDK software bundle.

On double clicking the executable file, the application will start to configure the windows installer as shown below.

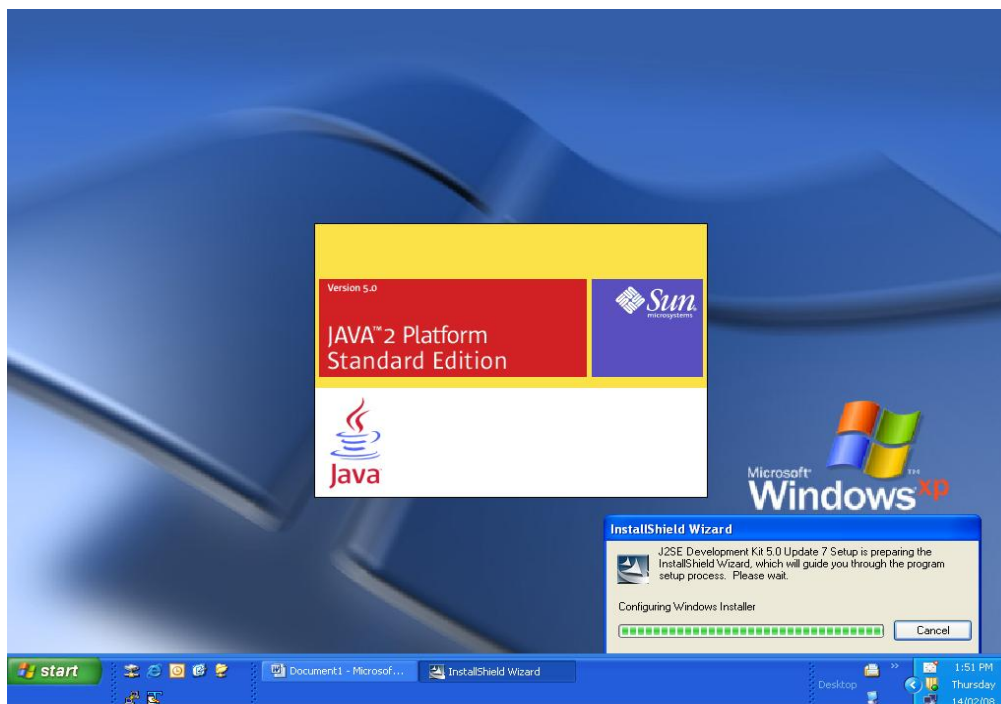


Fig. (1)

After configuring the windows installer, it will start to install and will show a message as given below.

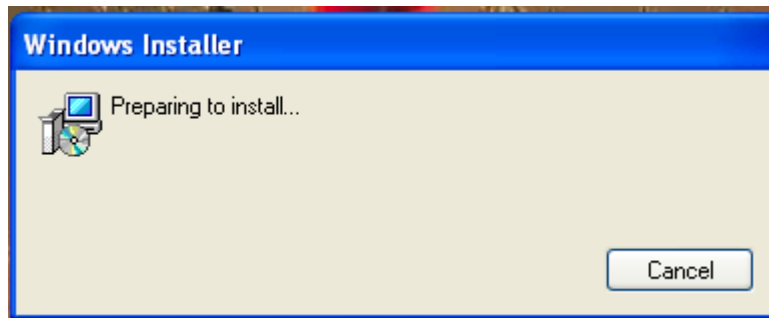


Fig. (2)

After the preparation is completed a license agreement window will open and ask for accept or reject the terms in the license agreement. The window is shown below.

Select 'I accept the terms in license agreement' option and click on 'Next' to continue.

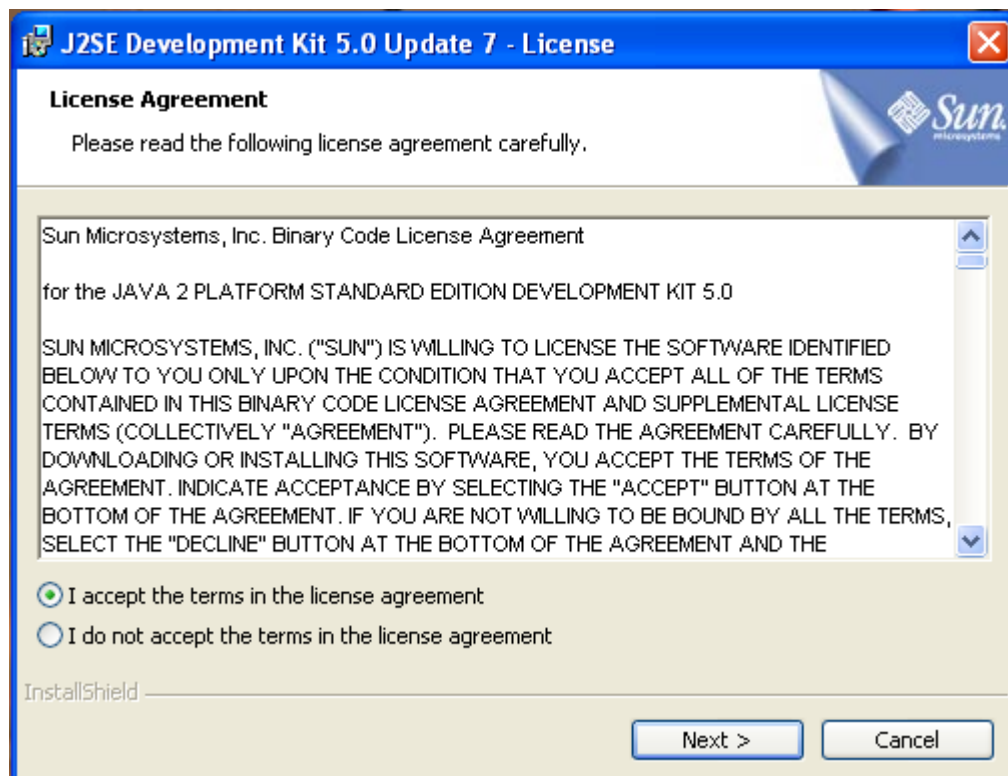


Fig. (3)

After clicking Next, the below window will appear to select optional features. Development tools will be selected by default.

The default path of installation is program files. It is recommended that the user installs the application in the default path.

Click on 'Next' to continue. Refer to Fig. (4)

If the user wants to change the installation path, click on Change button. This will allow the user to browse to the destination folder and click on OK. Refer to Fig. (4) & Fig. (5)

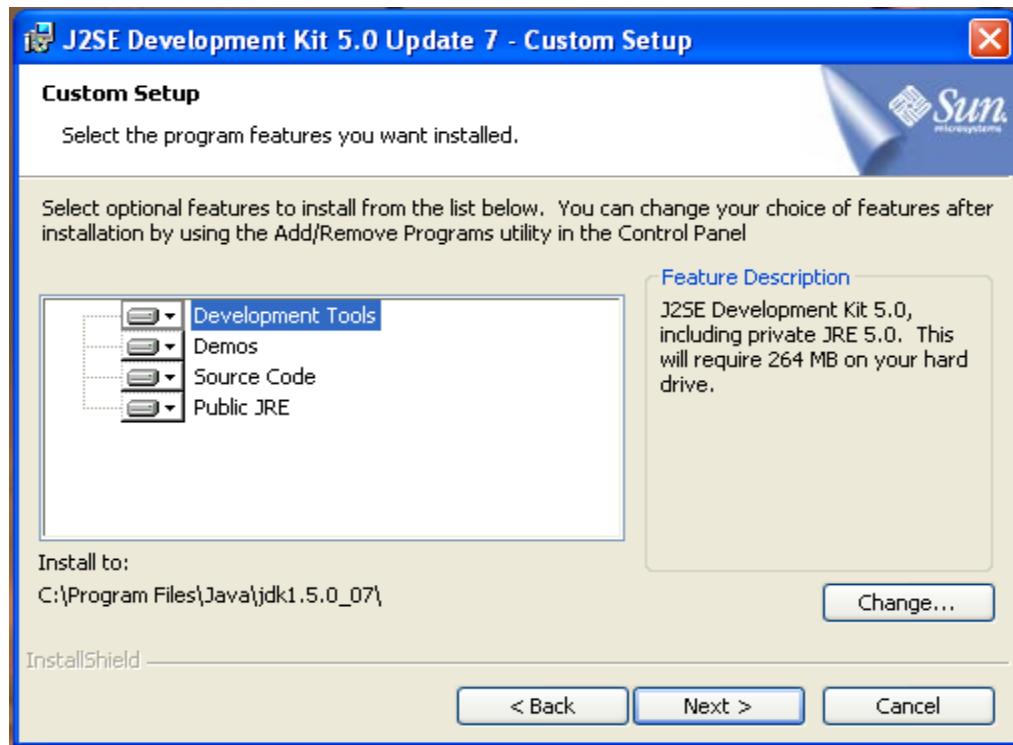


Fig. (4)

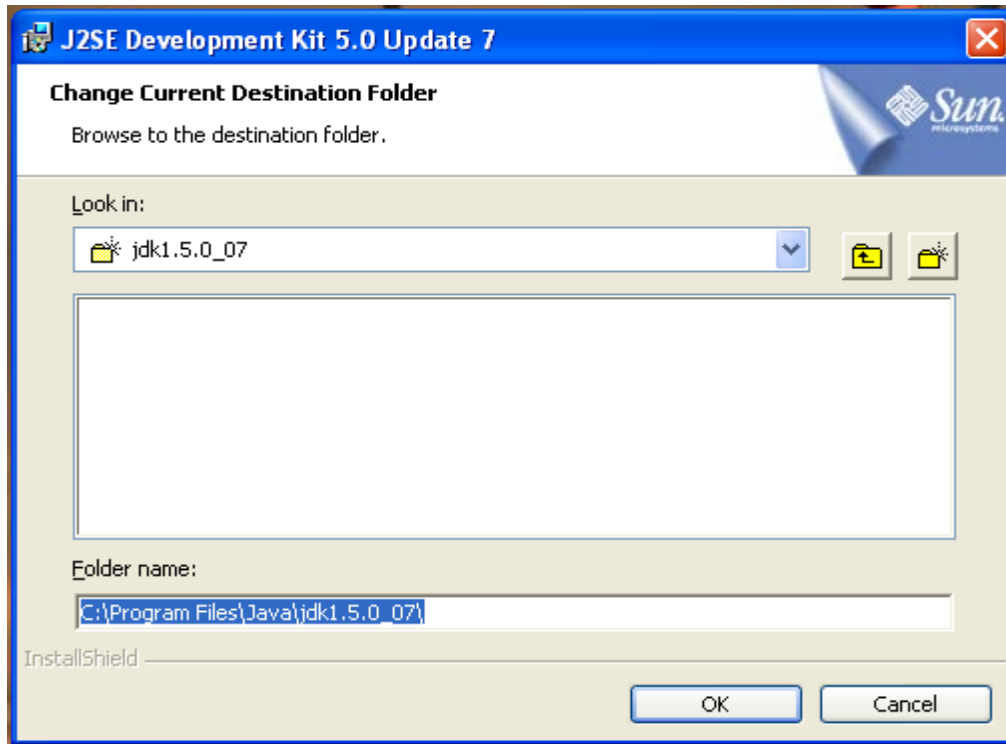


Fig. (5)

After clicking 'Next', the installation process will start with a status bar as shown below.

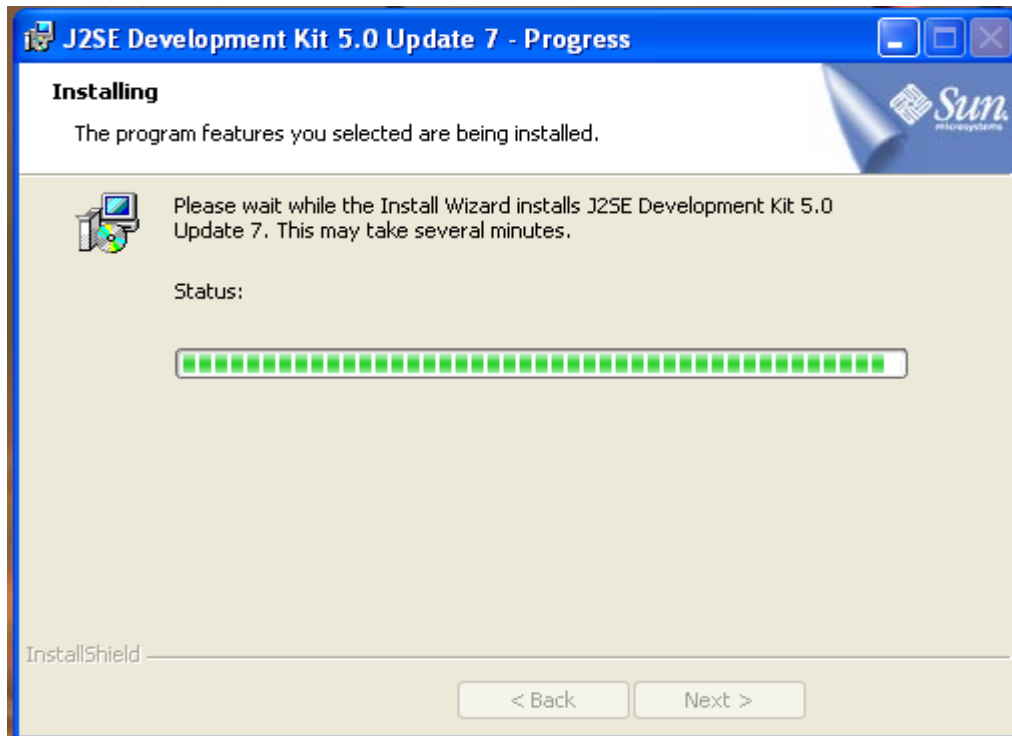


Fig. (6)

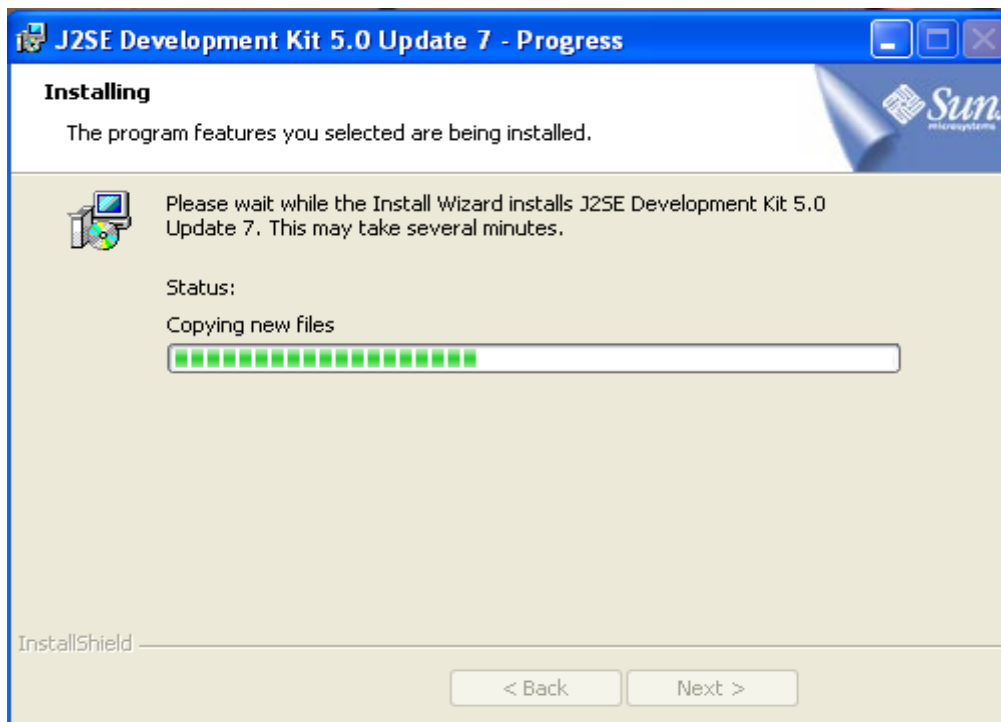


Fig. (7)

After the installation is complete the application will ask for browser registration. Select the browser to register and Click on 'Next' to continue

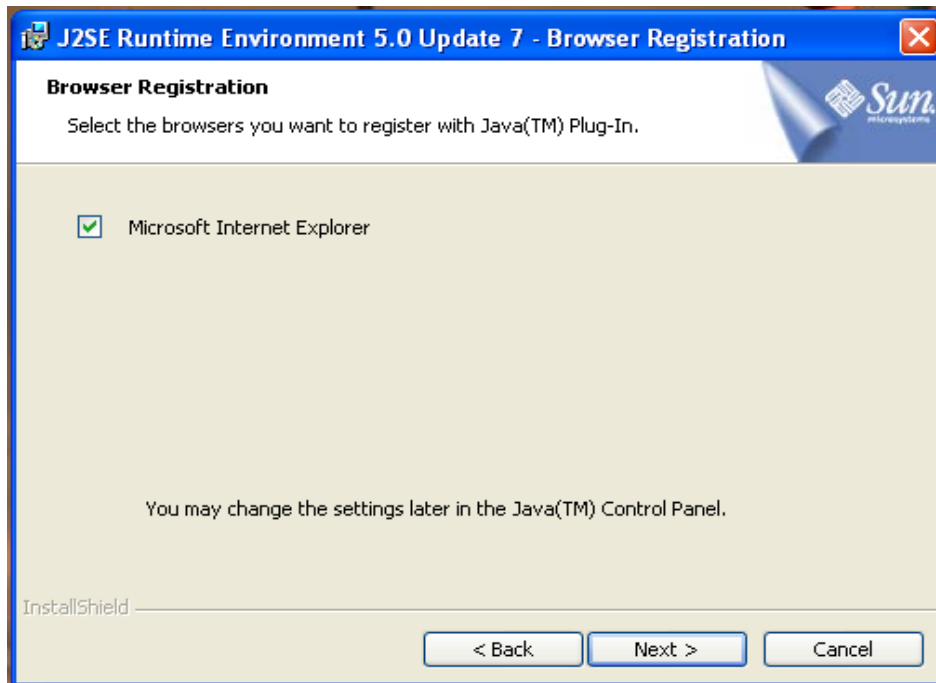


Fig. (8)

The setup will ask to select the program feature to install. Select J2SE Runtime Environment and click 'Next'

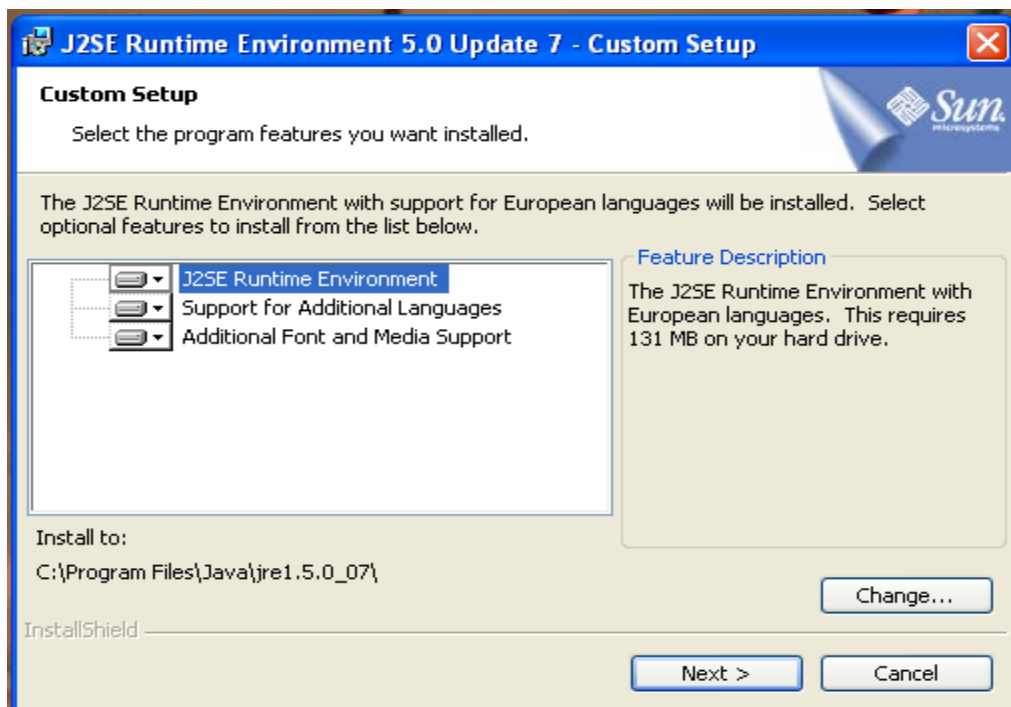


Fig. (9)

The installation will continue with the status bar giving the indication.

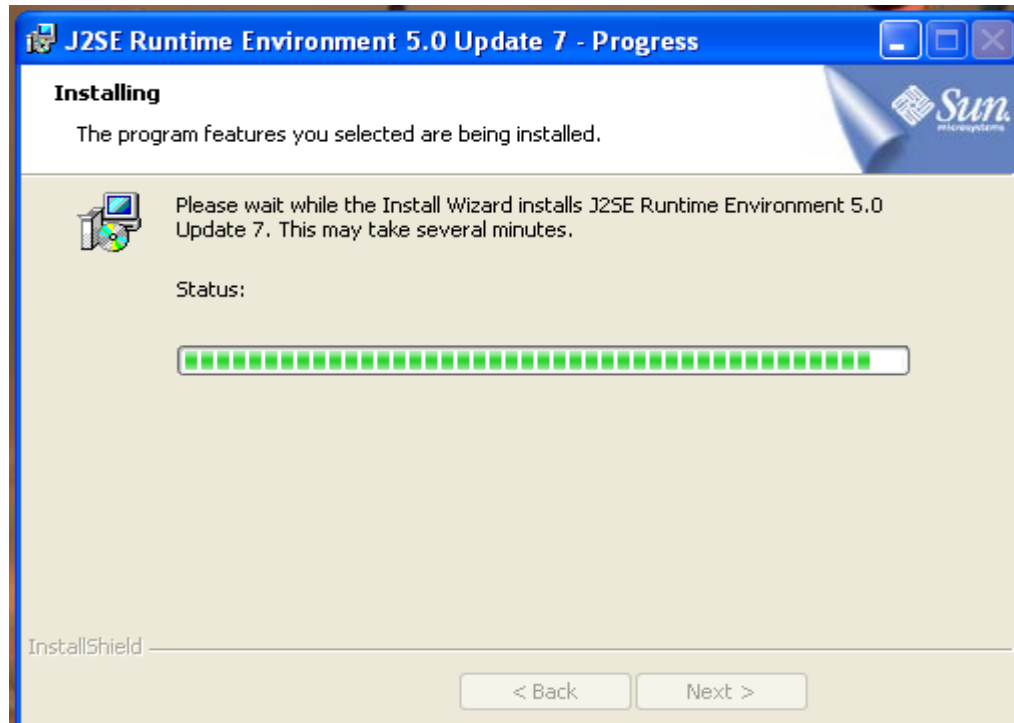


Fig. (10)

After the installation is complete, a message will appear stating "Installation Completed". Click on 'Finish' button. Your computer system should now be ready to use the FPU and FVU

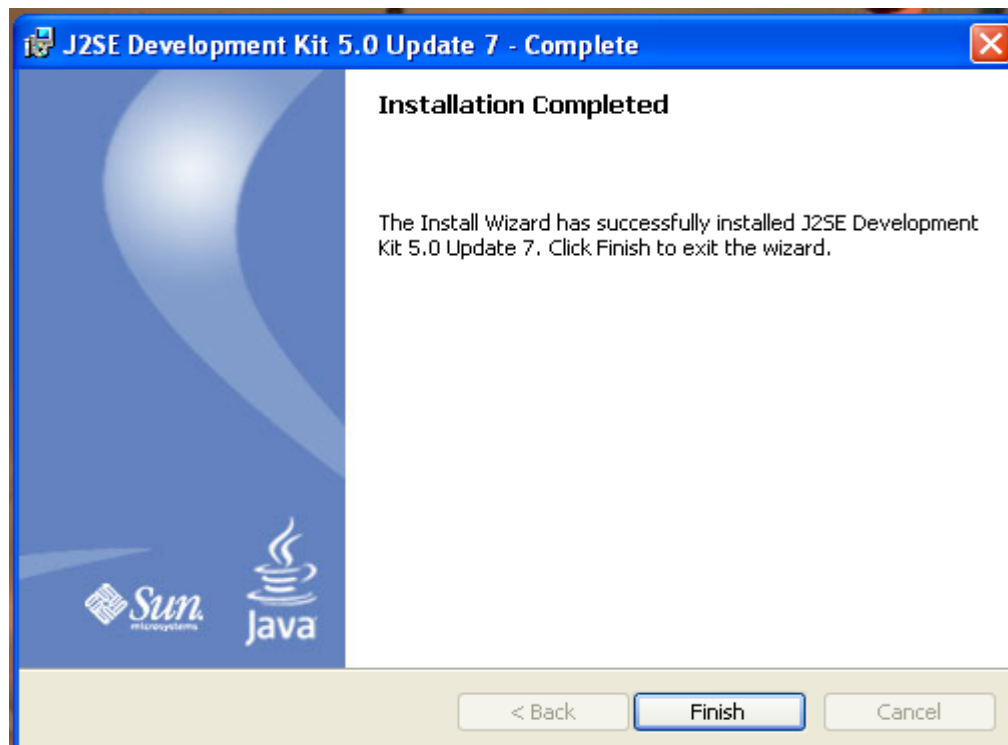


Fig. (11)